

Lot 711

BARDIA at EDMONDSON PARK

HOUSE AND
LAND PACKAGE



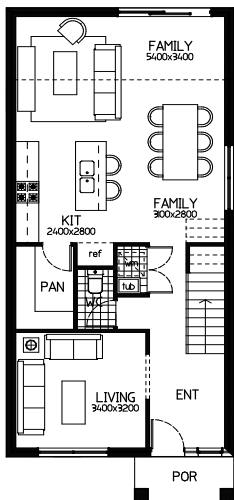
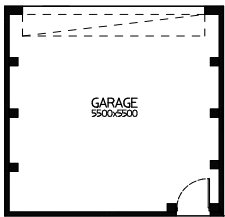
NEW BREEZE
AT BARDIA

\$740,820

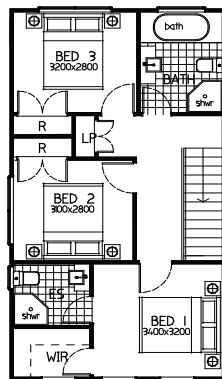
Modern | Stylish | Affordable

Parkside Release, New Breeze Edmondson Park

- Modern Standard Inclusions
- 20mm stone benchtops in kitchen
- Dishwasher
- Soft close doors and drawers in kitchen
- Tiles to living areas and porch
- Carpets to bedrooms
- Wall hung vanities with 20mm stone in bathroom and ensuite
- 15 downlights
- 40cm LED Oyster lights to bedrooms
- Vertical Blinds
- 2590mm ceilings to ground floor
- Remote control panel lift door
- Ducted Actron Air Conditioning
- Alarm system
- Flyscreens
- Upgraded T2 treated pine termite resistant timber frame and roof truss system
- Letterbox and clothesline
- Soft landscaping
- Land size 253.8m²
- House size 168.1m² | 18.09sq
- Land \$390,900 | House \$349,920



GROUND FLOOR PLAN



FIRST FLOOR PLAN

The content of this brochure was produced prior to planning approval, statutory approval and commencement of construction. Photographs and artist's impressions depicting the New Breeze estate and surrounding area and the interiors and exteriors are intended as a guide only and subject to change. Styling is indicative only and not provided. Information and images relating to the public park areas within and the surrounding park areas are indicative only. All outlines depicting areas are indicative only. Prospective purchasers should make their own enquiries. Correct as 17 Oct 2018